

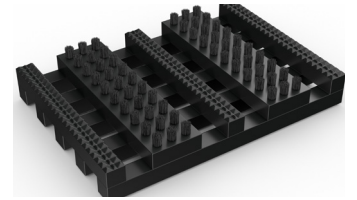
Frontrunner Brush Wide

Extra wide external matting with brush inserts designed for trapping large debris.



Large debris is no match for Frontrunner Brush Wide, a hard-wearing entrance mat specifically designed to trap stones, snow, ice and shingle.

Heavy-duty brush strips with bristles scrape shoes clean, while the extra wide open grid traps and collects the large debris, preventing it from being walked inside. Frontrunner Brush Wide works either as a standalone entrance mat, or can be interchanged with another Frontrunner system, like Frontrunner Brush or Frontrunner XT, in the summer months.



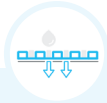
Features:



Diamond cut pattern



Two layer open-grid construction



Nylon brush inserts



Comes in 10m (33') rolls or modules



Made from flexible PVC



Benefits:



Slip resistant, high soil removal



Excellent drainage



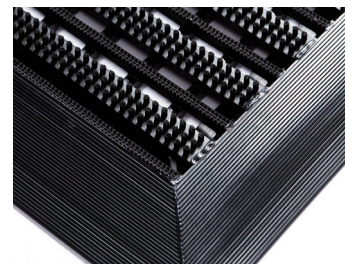
Scrapes shoes clean



Seamless installation



Easy to cut to fit on site, contours to uneven surfaces



qsmats - www.qsmats.co.uk

Tel: 01934 864367

Email: info@qsmats.co.uk

Unit 1 Hortswood Farm, Long Lane, Wrington, North Somerset, BS40 5SP.

qsmats 
commercial matting systems

Frontrunner Brush Wide

Data sheet

Standard sizes:

Product	Frontrunner Brush Wide
Height	14 - 19mm (9/16" - 3/4")
Standard roll options	10 x 0.6m (33' x 2')
	10 x 0.91m (33' x 3')
	5 x 1.2m (16'6" x 4')
Standard module options	0.8 x 1.2m (2'7" x 4')
	1 x 1.5m (3'3" x 4'11")
	1.1 x 2m (3'7" x 6'7")
Weight	7.8 kg/m ² (1.6 lb/sq.ft)

Surface modules are supplied with factory fitted PVC ramped edging to four sides.

Tolerances:

	Height (+/- 0.5mm)	Length (0+0.3mm)	Width (0+2mm)	
Frontrunner Brush Wide	14/19 mm	10 m	60 cm	91 cm
	14/19 mm	5 m	120 cm	

All dimensions are nominal

PVC grid technical information:

Acoustic	Excellent sound absorption
Brush inserts	Construction: Aligned tufting with Nylon 6.6 Monofilaments bristle content. Height: 4.5mm Diameter: 0.3mm
Chemical	Resistant to most acids, alkalines and oils.
Composition	Flexible Polyvinyl Chloride (PVC)
Environment	We don't use any substances included in the SVHC list under REACH in any of our matting products.
Fire	Nylon brush fibres: UL94 - V2
Reversion	Thermoplastic shrinkage can result in size reductions up to 2%. This may be accelerated in hot environments.
Thermal	Designed to function at temperatures from -23°C and up to +60°C. Slight size variation may occur at temperature extremes.
UV light	Resistant to PVC degradation
Warranty	Two years.

Nylon brush inserts technical information:

Construction	Aligned tufting
Bristle diameter	0.3mm
Insert thickness	12mm
Bristle content	Nylon 6.6 monofilaments
Bristle height	4.5mm
Backing	PVC

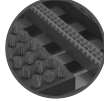
Frontrunner Brush Wide

Data sheet

Colours:



Black



Dark grey

More colours
available
upon request

Installation:

Frontrunner Brush Wide's one-piece construction means installation is simple:

- No special tools or previous site visits
- Fits with different well depths
- Contours to the floor

Cleaning:

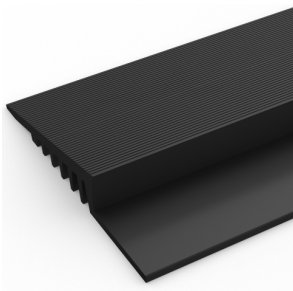
Keeping Frontrunner Brush Wide looking good is easy:

- Reduces cleaning intervals
- Simply roll or lift to clean
- No special tools needed
- Easy to clean using a vacuum, plus a coarse brush for clearing the debris in the grid

Ancillaries:

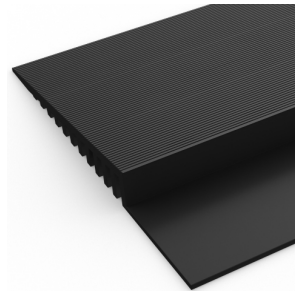
> For surface mounted installations

PVC edging (H: 14mm, W: 60mm)



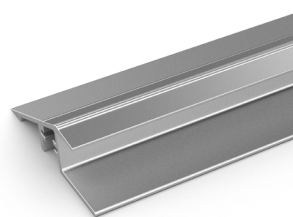
Supplied in rolls of 10.1m (33') length with cold welding paste. Comes in black, dark grey, dark brown, holly green, Oxford blue, yellow. Size: 14mm x 60mm x 10.1m (9/16" x 2 1/2" x 33')

PVC edging (H: 14mm, W: 100mm)



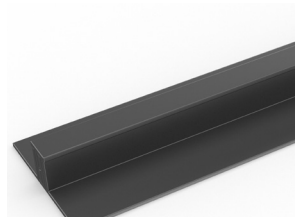
Supplied in rolls of 10.1m (33') length with cold welding paste. Comes in black, dark grey and yellow. Size: 14mm x 100mm x 10.1m (9/16" x 3 3/4" x 33')

Aluminium edging (H: 14mm)



Supplied in sections of 2m (6'6") length with fixing screws and plugs. Comes in anodised aluminium and powder coated yellow. Size: 14mm x 45mm x 2m (9/16" x 1 13/16" x 6'6")

PVC snap track (H: 14mm)

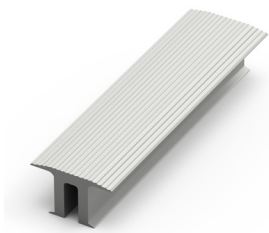


Two-part snap track that can be welded together to join rolls end-to-end or side-to-side to cover large areas. Supplied with cold welding paste. Comes in black and dark grey. Size: 14mm x 2.5m (9/16" x 8'2").

Ancillaries:

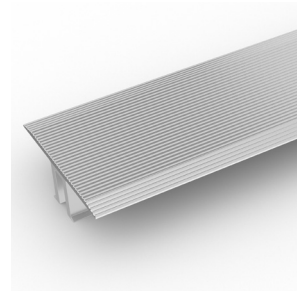
> For recessed installations

T frame (H: 14mm)



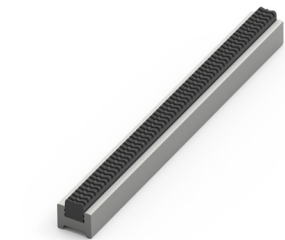
You can use a T frame (27mm) to divide the matting into sections left-to-right – this makes it easier to lift and clean. Supplied in sections of 3m (10') length with fixing screws and plugs. Comes in anodised aluminium, powder coated dark grey and black

TL frame (H: 14mm)



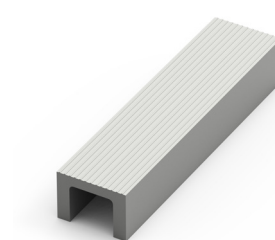
You can use a T/L frame (55mm) to divide the matting into sections left-to-right – this makes it easier to lift and clean. Supplied in sections of 3m (10') length with fixing screws and plugs. Comes in anodised aluminium

H section (H: 14mm)



If the front-to-back dimension of the mat well is greater than the final width of your matting, you may need a H section to secure the different sections together. Supplied in sections of 3m (10') length, with fixing screws and plugs. Comes in black, with mat insert colour specified. Size: 14mm x 13mm (9/16 x 1/2")

U section (H: 14mm)



If the front-to-back dimension of the mat well is greater than the final width of your matting, you may need a U section to secure the different sections together. Supplied in sections of 3m (10') length, with fixing screws and plugs. Comes in anodised aluminium, powder coated dark grey and black. Size: 14mm x 19mm (9/16" x 3/4")

L frame (H: 15mm)



Installing around a circular door or non rectangular space? You'll need a L frame to secure the matting. Size: 15mm x 2.7m length (5/8" x 8')